

# PXI Serial Installation Guide

**This guide includes instructions for installing your PXI serial hardware and software.**

**If you are using Windows Me/9x, see page 2.**

**If you are using Windows NT, see page 6.**

**If you are using Windows 2000, see page 10.**

**Windows Me/9x**

**Windows NT**

**Windows 2000**

# PXI Serial Installation for Windows Me/9x

# 1

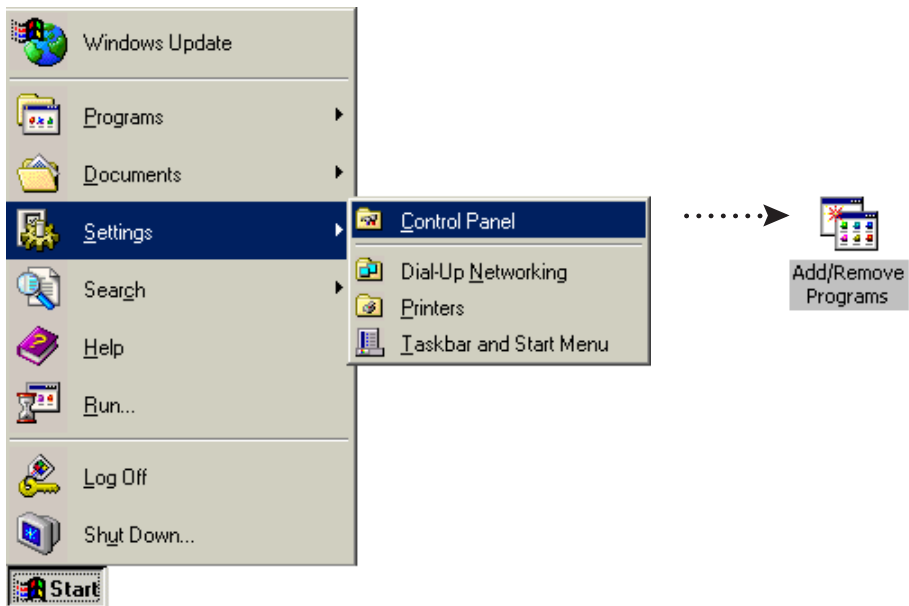
Insert the NI Serial Software CD.



Windows Me/9x

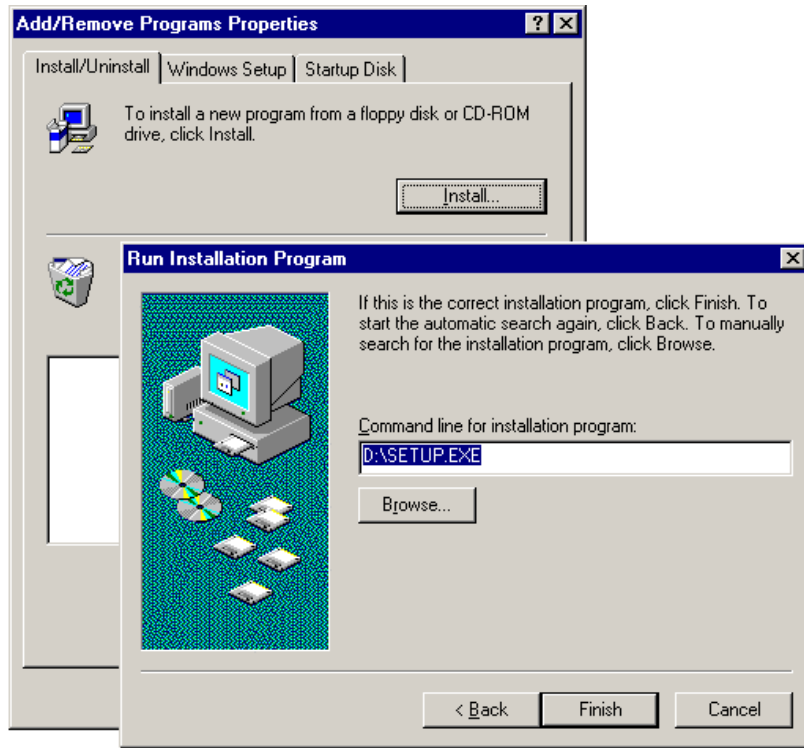
# 2

If the NI Serial setup starts automatically, follow the onscreen instructions and skip to Step 4. Otherwise, select Start>>Settings>>Control Panel. In the Control Panel window, double-click on Add/Remove Programs.



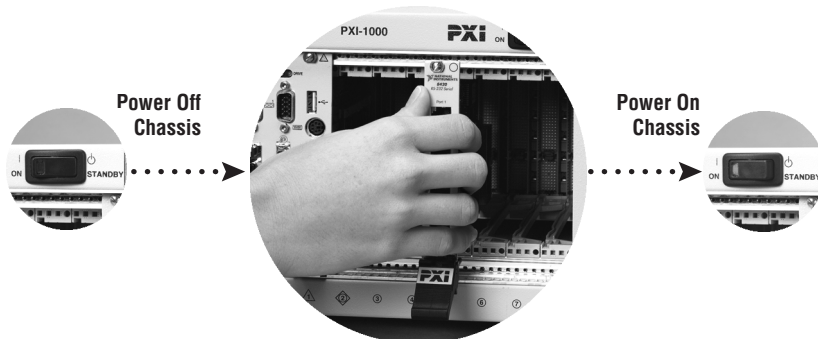
# 3

In the Install/Uninstall tab, click on Install. When the Run Installation Program window appears, click on Finish and follow the onscreen instructions.



# 4

Remove the CD. Shut down the computer, install the hardware, and power on the computer.



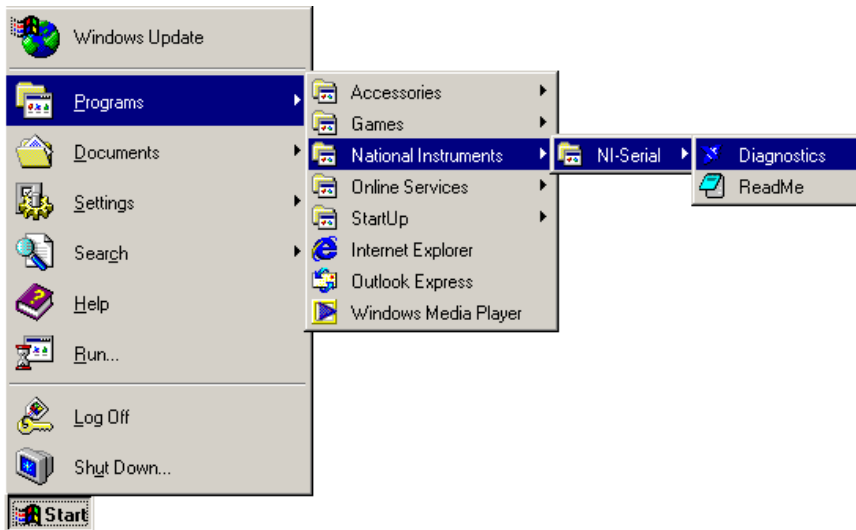
# 5

When you restart the computer, the Add New Hardware Wizard appears. Complete the wizard by clicking Next in each window and then Finish.



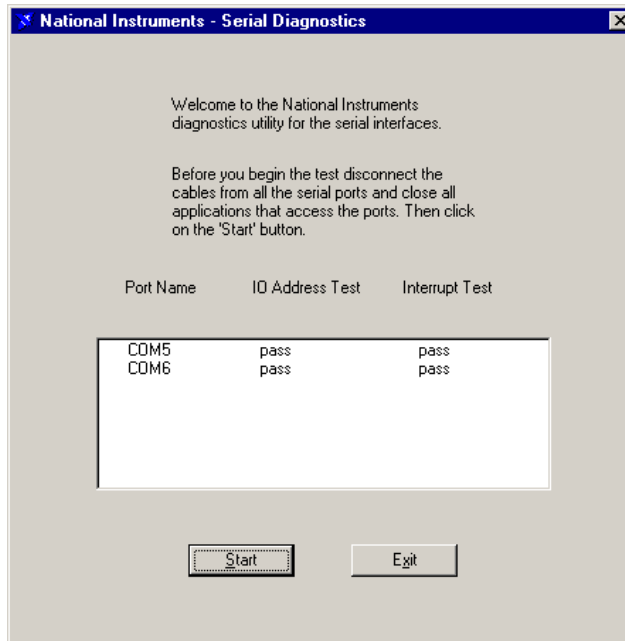
# 6

Select Start>>Programs>>National Instruments>>NI Serial>>Diagnostics.



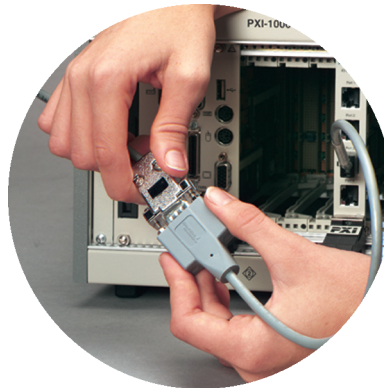
# 7

The Serial Diagnostics Window appears. Click Start to run the diagnostics.



# 8

Connect the cables.

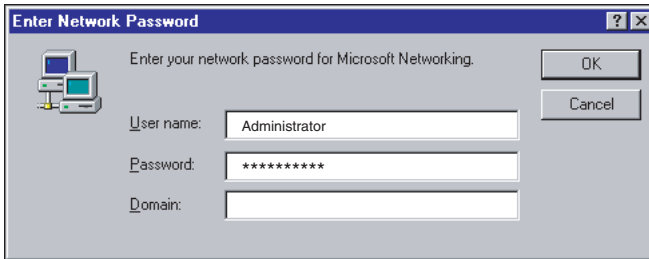


Refer to your National Instruments serial manual (in PDF format on the CD) for more information about troubleshooting problems, configuring the hardware and software, programming requirements, and more.

# PXI Serial Installation for Windows NT

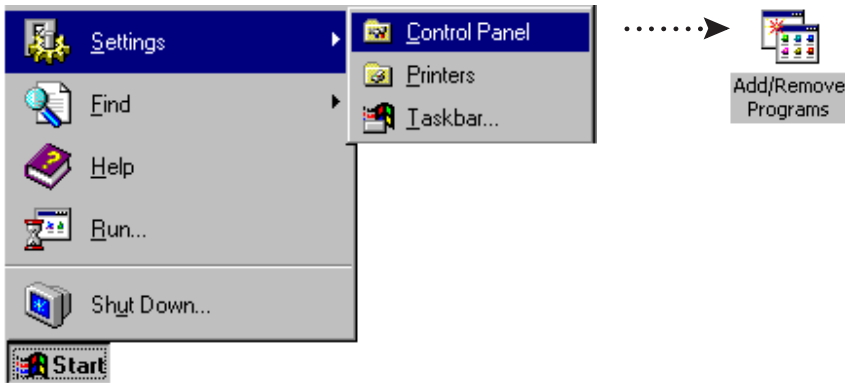
# 1

**Log on as Administrator or as a user with administrative privileges. Insert the NI Serial Software CD.**



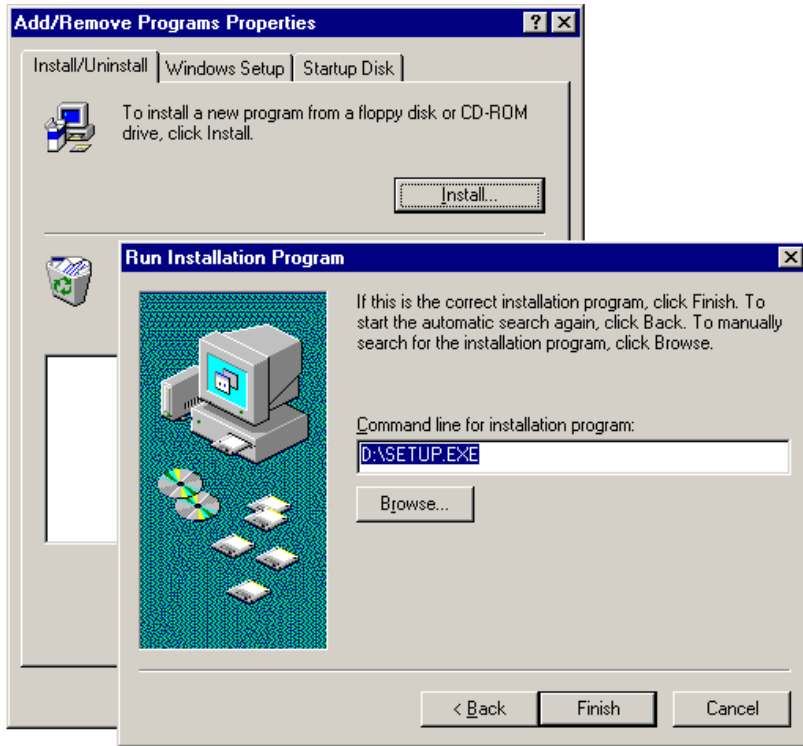
# 2

**If the NI Serial setup starts automatically, follow the onscreen instructions and skip to Step 4. Otherwise, select Start»Settings»Control Panel. In the Control Panel window, double-click on Add/Remove Programs.**



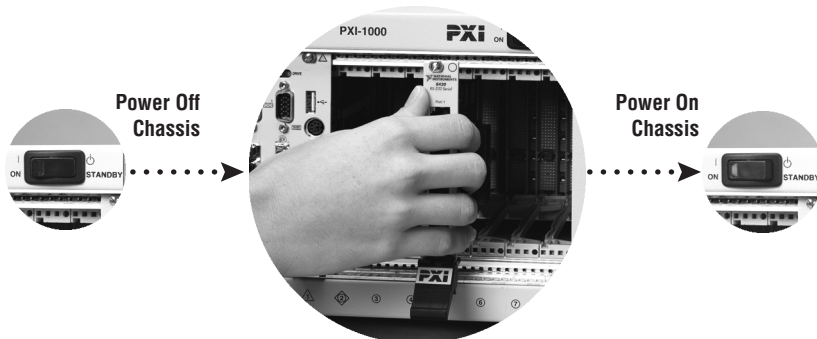
# 3

In the Install/Uninstall tab, click on Install. When the Run Installation Program window appears, click on Finish and follow the onscreen instructions.



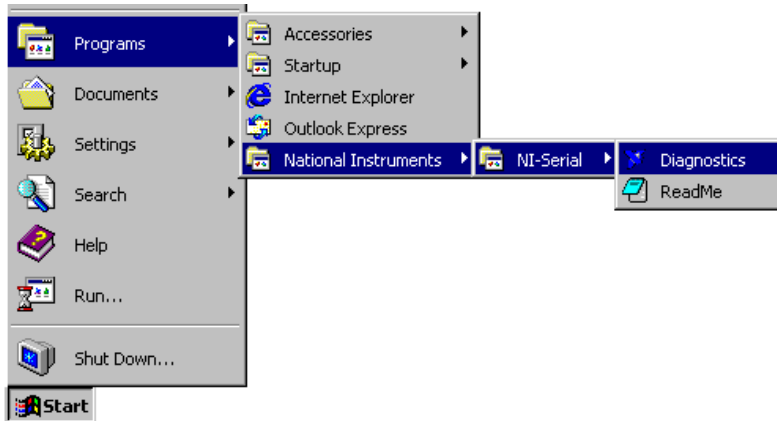
# 4

Remove the CD. Shut down the computer, install the hardware, and power on the computer.



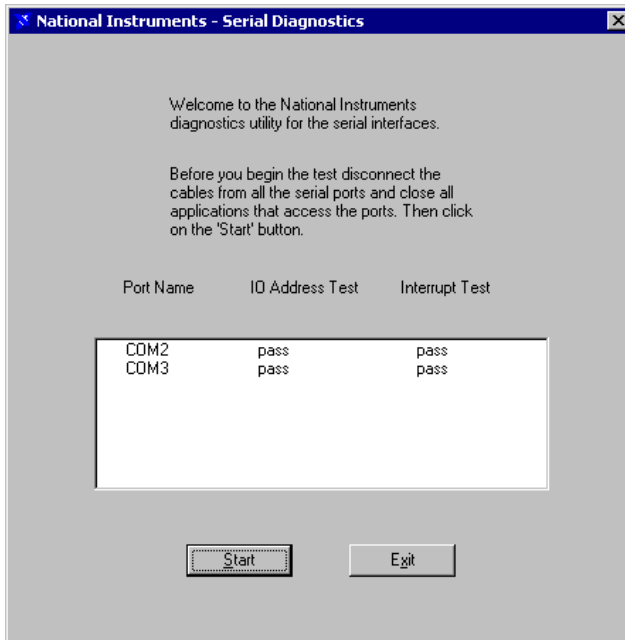
# 5

Select **Start»Programs»National Instruments»NI Serial»Diagnostics**.



# 6

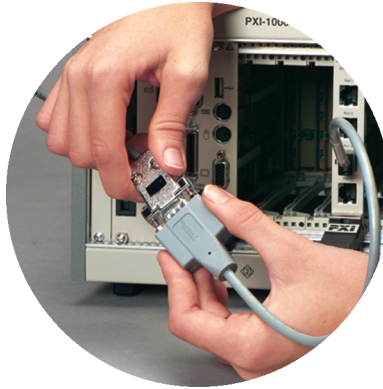
The **Serial Diagnostics Window** appears. Click **Start** to run the diagnostics.





# 8

## Connect the cables.



**Refer to your National Instruments serial manual (in PDF format on the CD) for more information about troubleshooting problems, configuring the hardware and software, programming requirements, and more.**

# PXI Serial Installation for Windows 2000

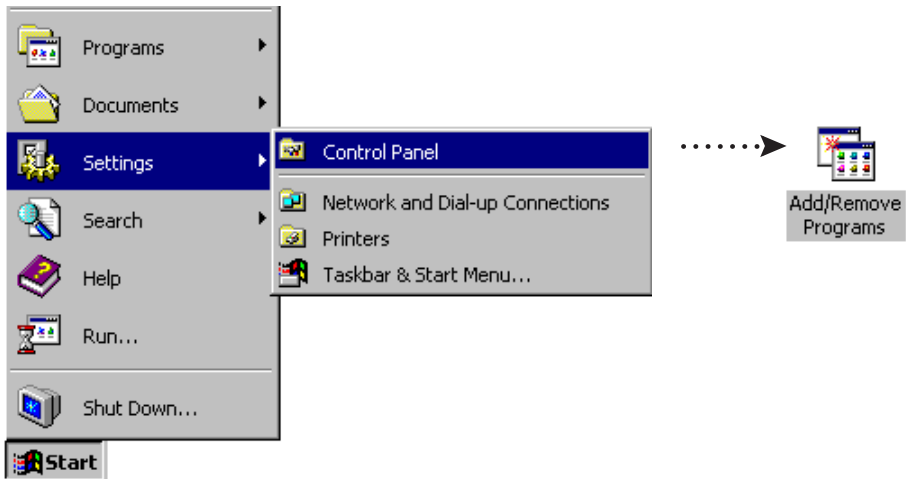
# 1

Log on as Administrator or as a user with administrative privileges. Insert the NI Serial Software CD.



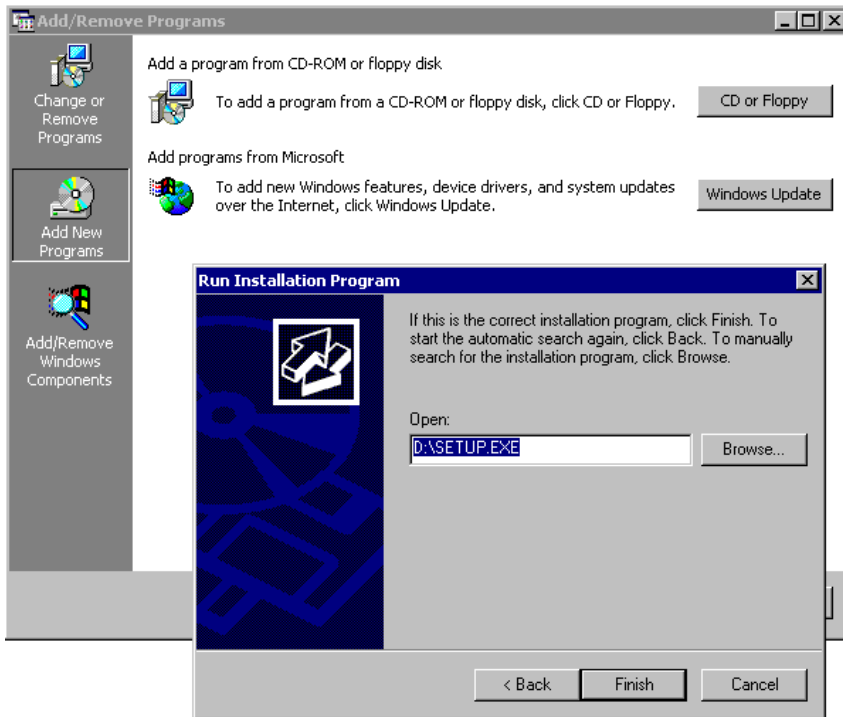
# 2

If the NI Serial setup starts automatically, follow the onscreen instructions and skip to Step 4. Otherwise, select Start>>Settings>>Control Panel. In the Control Panel window, double-click on Add/Remove Programs.



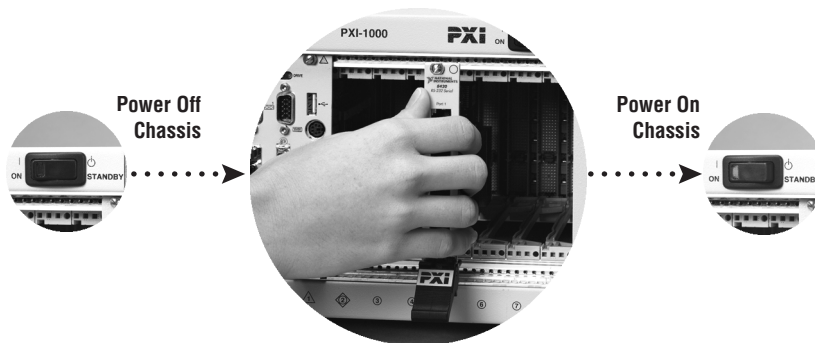
# 3

Click on Add New Programs, CD or Floppy, and Next. When the Run Installation Program window appears, click on Finish and follow the onscreen instructions.



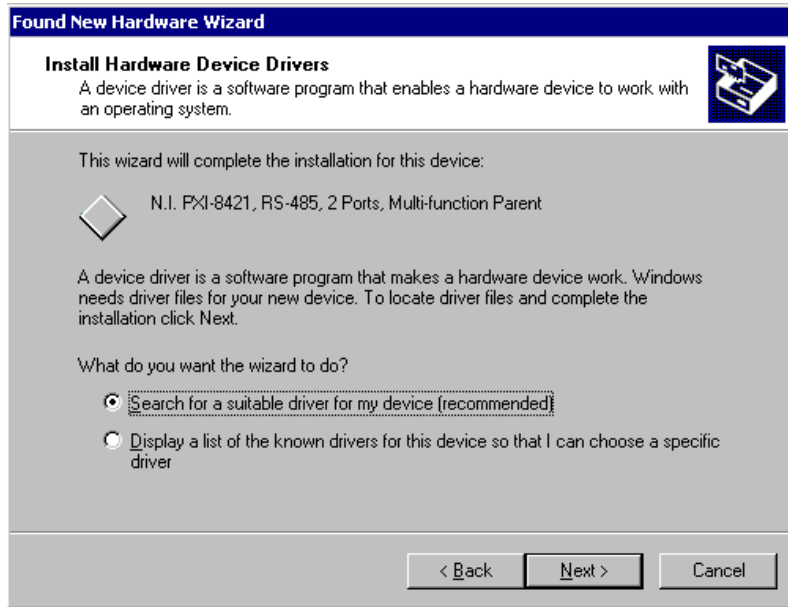
# 4

Remove the CD. Shut down the computer, install the hardware, and power on the computer.



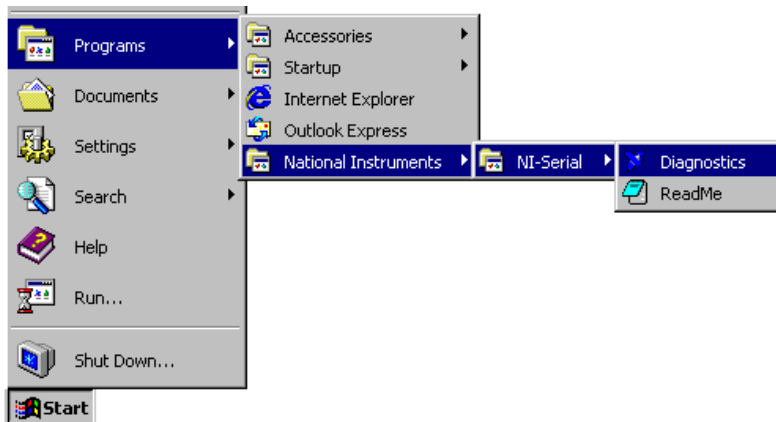
# 5

When you restart the computer, the Found New Hardware Wizard appears. Complete the wizard by clicking Next in each window and then Finish.



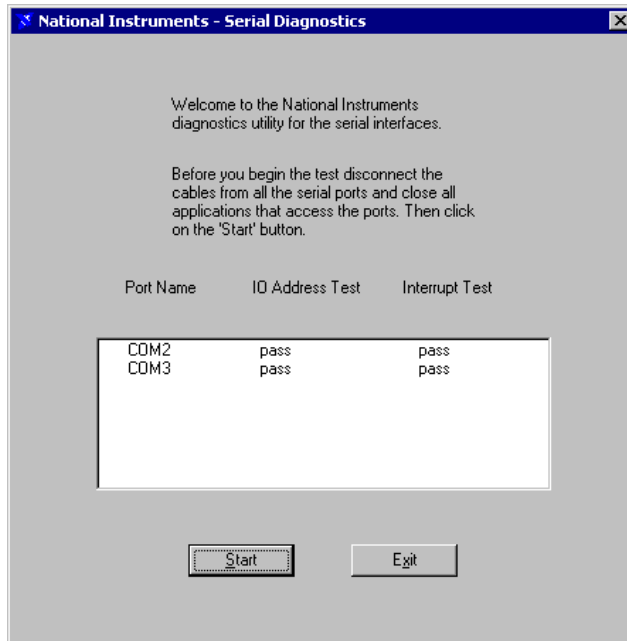
# 6

Select Start»Programs»National Instruments»NI Serial»Diagnostics.



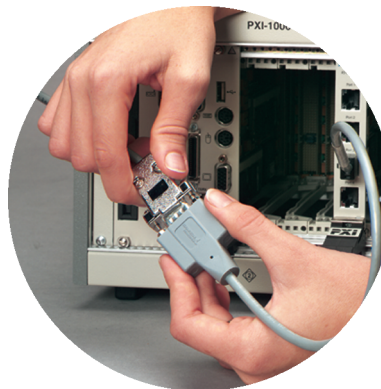
# 7

The Serial Diagnostics Window appears. Click Start to run the diagnostics.



# 8

Connect the cables.



Refer to your National Instruments serial manual (in PDF format on the CD) for more information about troubleshooting problems, configuring the hardware and software, programming requirements, and more.



[ni.com/support](http://ni.com/support)  
[ni.com/ask](http://ni.com/ask)

Tel: (512) 795-8248 • Fax: (512) 683-5678 • [ftp.ni.com](http://ftp.ni.com)

© Copyright 2000 National Instruments Corporation. All rights reserved. National Instruments™ and ni.com™ are trademarks of National Instruments Corporation. Product and company names mentioned herein are trademarks or trade names of their respective companies.



322935A-01

Sep00